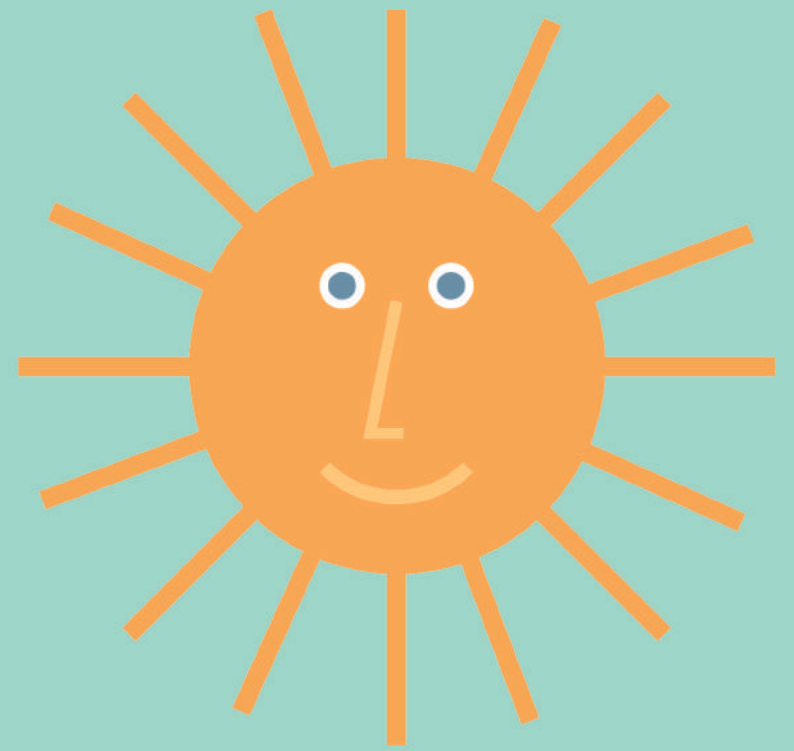


Welcome to Collective:

a centre for contemporary art based in the old City Observatory on Calton Hill.

We hope you enjoy exploring our grounds, the surrounding park and looking for the animals and plants who make their homes here.



Collective is a local charity – if you enjoyed your visit, please consider making a donation.

Make sure to visit our buildings to see the art and telescopes too!



psst...Use the checklist on the back to identify trees, birds and minibeasts around Calton Hill. How many can you spot?

COLLECTIVE PLAY

Nature

Checklist

Use the illustrations below to identify trees, birds and minibeasts around Calton Hill.

Beastie Hunting

The park is filled with many different types of bugs and beasts if you look closely – which of these can you find hiding?

slug

woodlouse

ladybird

bee

beetle

worm

Bird Spotting

How many different birds can you spot on your walk around the hill?

wren

wood pigeon

starling

robin

blue tit

blackbird

magpie

Tree Detectives

Which of these trees can you find on Calton Hill? Remember, they might look different in summer and winter!

Hawthorn

Sycamore

Elder

Rowan

Sweet Chestnut